

Nutley FC Tournament 2025



Welcome instructions for coaches

Address

Fords Green, Nutley, [TN22 3LH](#). Tournament contact number 07886 270219.

Timings

Morning - U9 girls & U10 mixed

Registration 08:30. Managers' briefing 08:45. Kick-off 09:00. Finish at about 13:00.

Afternoon - U12 mixed & U12 girls

Registration 13:30. Managers' briefing 13:45. Kick-off 14:00. Finish at about 18:00.

Documents

Please read the [Tournament Competition Rules](#).

Please print, complete and bring the [Team Registration form](#) on the day.

Please complete the [Filming and Photography Consent form](#) online by 15-Jun-24.

Bibs

Please bring bibs or away kits in case of clashes (the team drawn away will be expected to change).

Fixtures and results

Fixtures & results can be seen at <https://www.tournify.uk/live/nutleyfc2025/standings>

Respect the refs

We want everyone to be respectful to everyone else. We want to help develop junior referees. So we're hoping to employ junior referees to ref the games and a couple of senior referees to provide support. Poor behaviour is really not on and won't be tolerated.



Shade

You are welcome to bring a gazebo or similar if the weather is hot. Please make sure everyone in your party brings hats, sunscreen etc.

Health and Safety

It is a requirement that all visiting teams will have coaching staff who are suitably first aid trained and will be in possession of a suitable first aid kit for use if required. Emergency first aid supplies will be available from the control tent if needed but NFC representatives will not provide first aiders to administer the same.

Nutley FC has completed a [Tournament Risk Assessment](#).

There is a defibrillator on the front wall of the pavilion.

Communication of fixtures and results

The Tournify app will be used to communicate fixtures, results and standings. Our Tournify site is <https://www.tournify.uk/live/nutleyfc2025>

In addition WhatsApp groups will be created for each age group and the coaches mobile phone numbers added to these WhatsApp groups. The organisers will use these for ad-hoc messages.

Miscellaneous

Teas, coffees, cakes, BBQ food and ice creams will be available to purchase (contactless and cash).

Water bottles can be refilled free of charge in the pavilion.

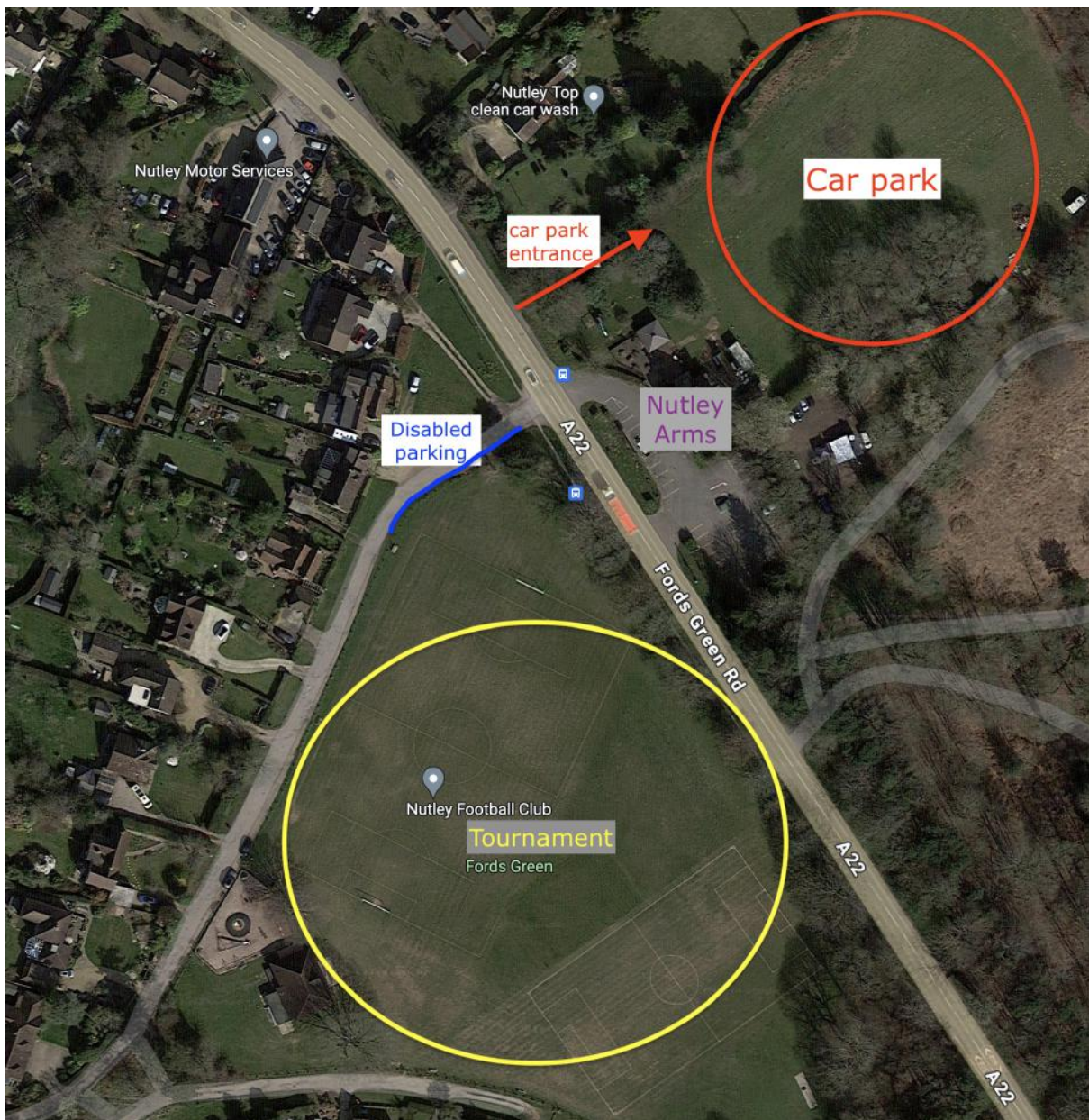
Please no dogs at the tournament.

We ask spectators to stand behind the respect barriers and encourage them not to stand behind the goals. We ask coaches to stand on the opposite side of the pitch from the spectators.



Car Parking

Car parking will be provided in the field behind the Nutley Arms (opposite Fords Green). The postcode for the Nutley Arms is TN22 3LJ. The cost will be £4 per car. Disabled parking will be provided on Fords Green Road accessed from the A22. Please do not park along the side of the A22. Please car share if you can - it makes sense for your pocket, the environment and our neighbours.



Pitch layout



Spirit of the Game

Team Managers should be reminded that:

- The emphasis is on the enjoyment of competing fairly and should remind their team members that they are representing their schools/clubs and should behave accordingly.
- They are responsible for the behaviour of their team during the Games.
- No young players are going to develop and learn more about playing football by standing on the touchline every game, so ensure everybody plays an equal role.

Competitors should be reminded that:

- Winning at all costs is not encouraged and teams must play within the rules of the competition.
- No intimidation of referees or officials will be permitted and competitors should accept all decisions without argument.
- Win and lose graciously and in the correct manner.

Spectators should be reminded that:

- Foul and abusive language will be dealt with by the Tournament Committee who have the power to stop the event in progress.
- Positive encouragement goes a long way, negative encouragement hinders development and may be damaging to the young players.



Local medical facilities

Minor Injuries Unit
Uckfield Community Hospital
Framfield Road
Uckfield
TN22 5AW
01825 721501
13 mins by car (6 miles)
Open 8am to 8pm, 7 days/wk

Minor Injuries Unit
Crowborough War Memorial
Hospital
Southview Road
Crowborough
TN6 1HB
01892 337241
13 mins by car (7 miles)
Open 8am to 8pm, 7 days/wk

Accident & Emergency
Princess Royal Hospital
Lewes Rd
Haywards Heath
RH16 4EX
01444 441881
21 mins by car (12 miles)
Open 24 hours

Defibrillator located on pavilion front wall.

Tournament sponsors

We have four lovely local companies sponsoring our tournament. A massive thank you to [Morgan Kelly Solicitors](#), [AM Skip Hire](#), [Nutley Motor Services Ltd](#) and [Ron Gibson](#). Our tournament is a major fundraiser for us and allows us to keep our player fees as low as possible and to buy equipment to play and look after the green. So the support of local businesses is very much appreciated.

